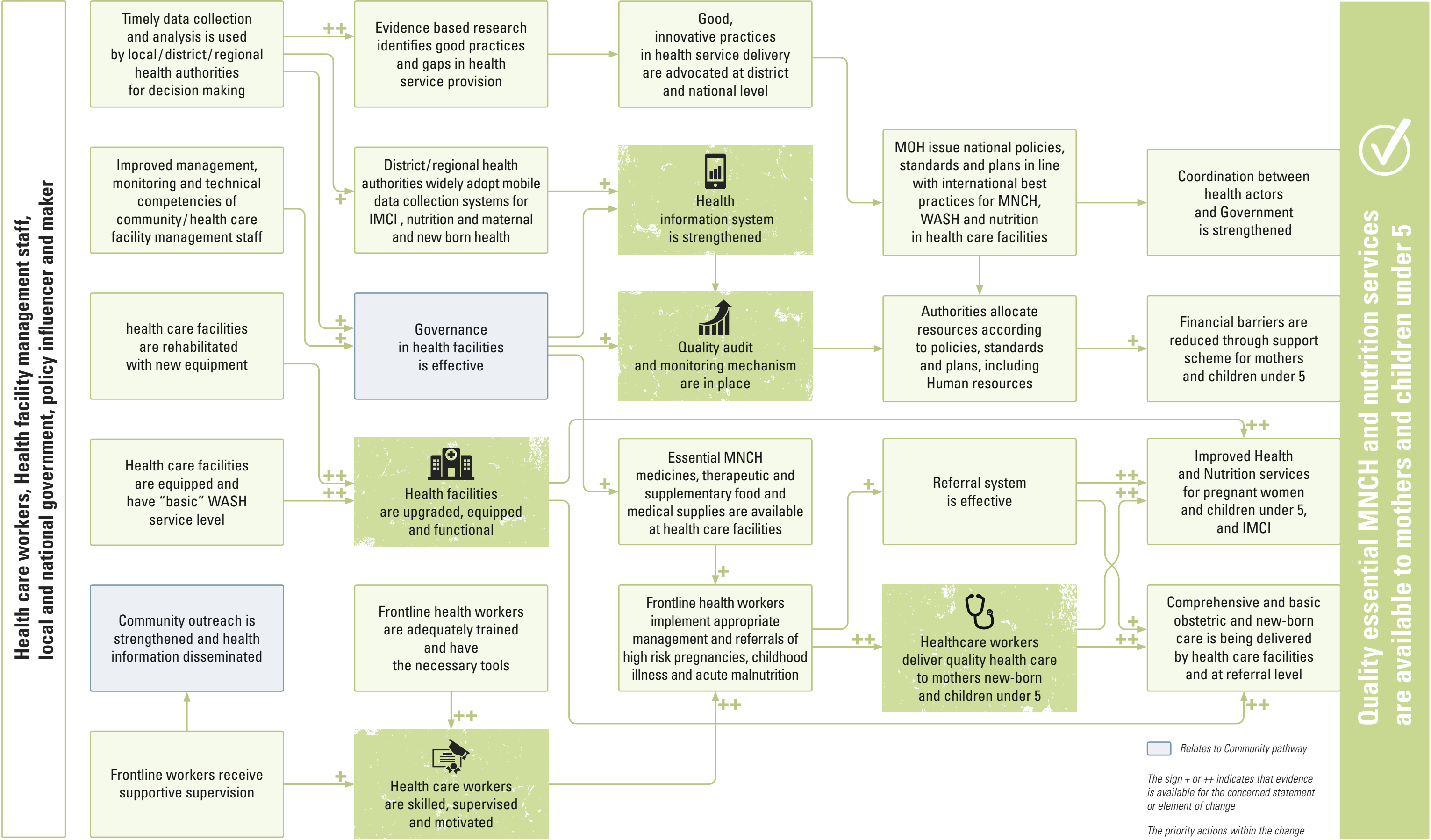


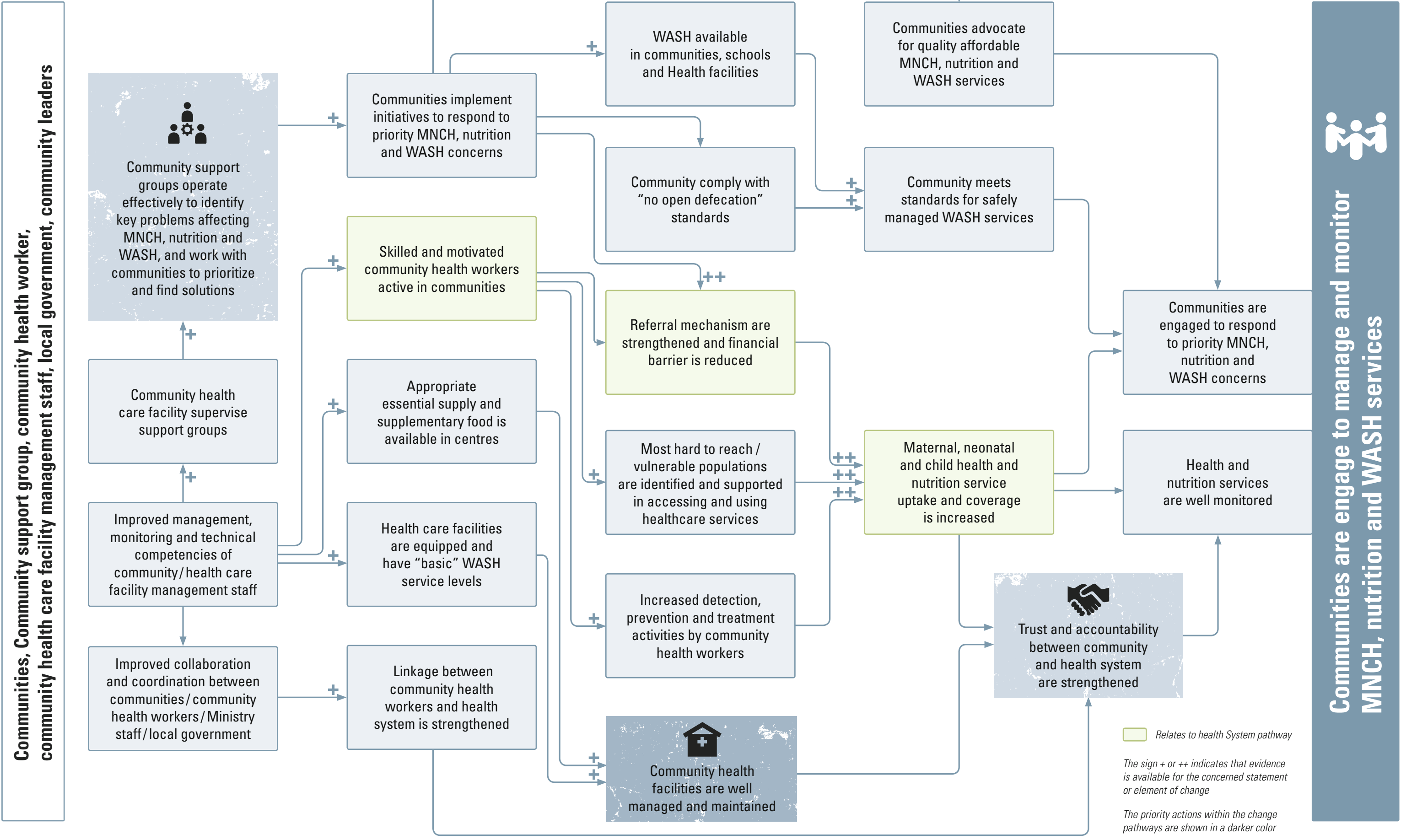
Theory of change Health System Pathway



Short term → Long term

- Programme strategies and interventions:**
- Training and support to health care workers (men and women) and health facility management staff
  - Renovation of health facilities including WASH standards
  - Supporting implementation of IMCI in Health facility
  - Strengthening data collection and monitoring system
  - Advocacy for adoption of CMAM in national health system and universal Health coverage

## Theory of change Community Pathway



 *Relates to health System pathway*

*The sign + or ++ indicates that evidence is available for the concerned statement or element of change*

*The priority actions within the change pathways are shown in a darker color*

### Short term

### Long term

## Programme strategies and interventions:

- Strengthening competencies of community health workers, community clinic management committees (men and women)
- Mentoring coordination mechanisms between community and health system

- Empowering and mobilising communities through Behaviour Change Communication and Participatory Learning Action (men and women)
- Information Education and Communication on sanitation and hygiene

Theory of change Mothers, Children and Families Pathway

